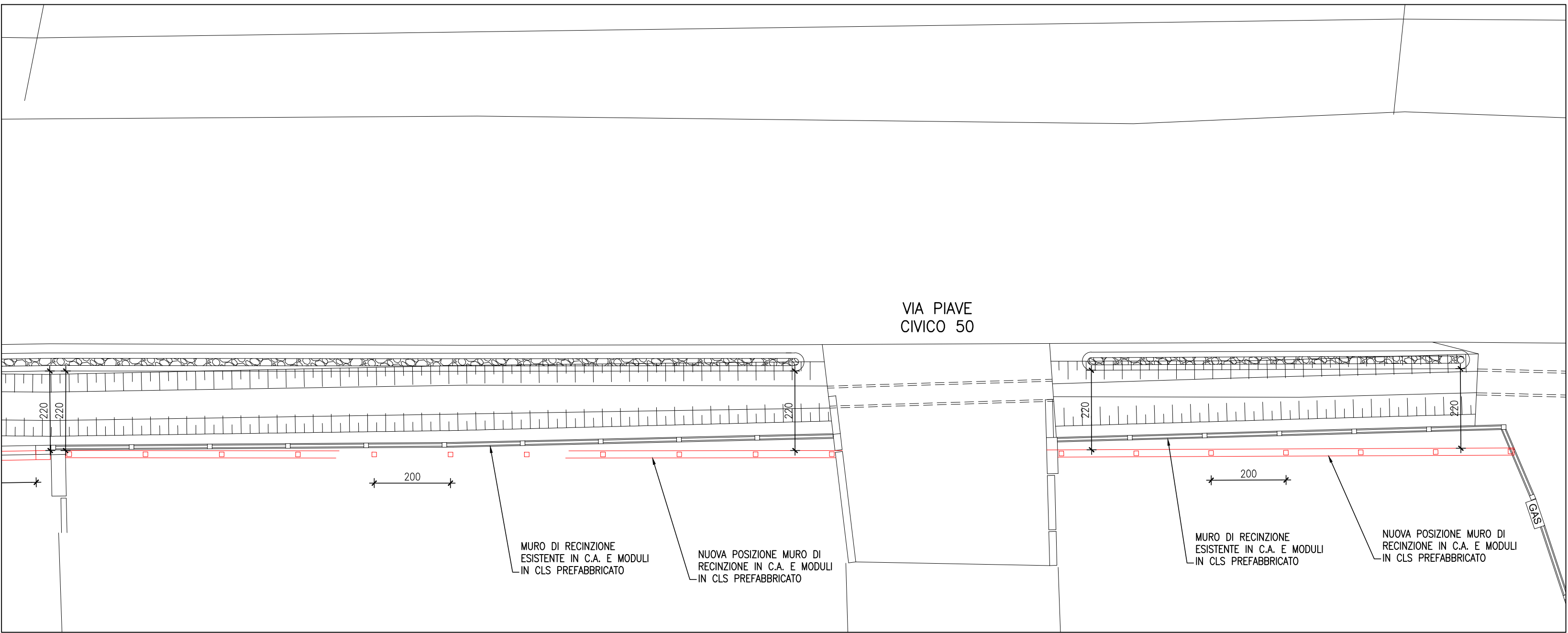
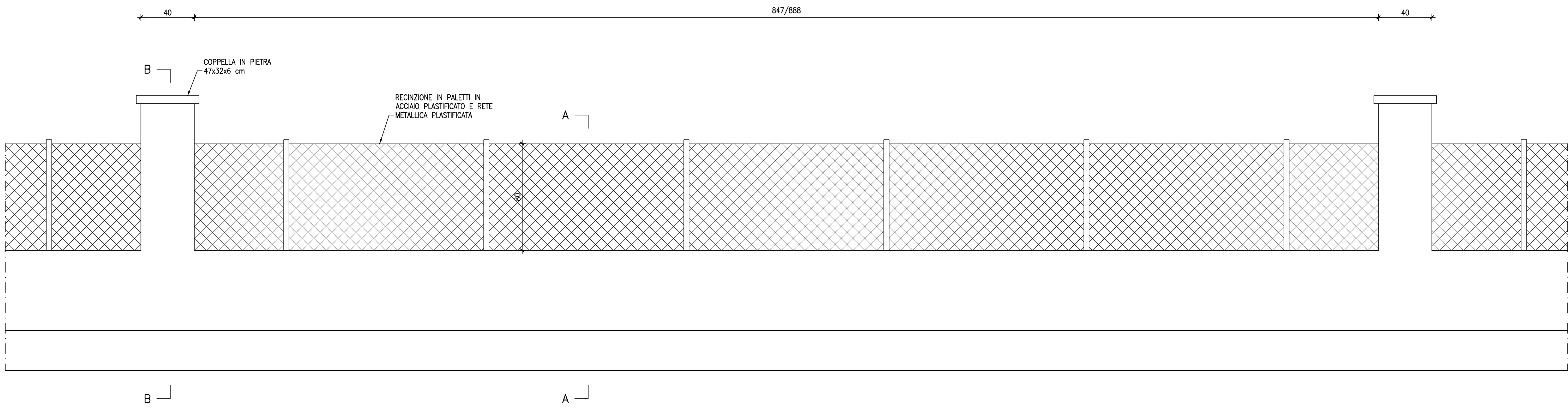
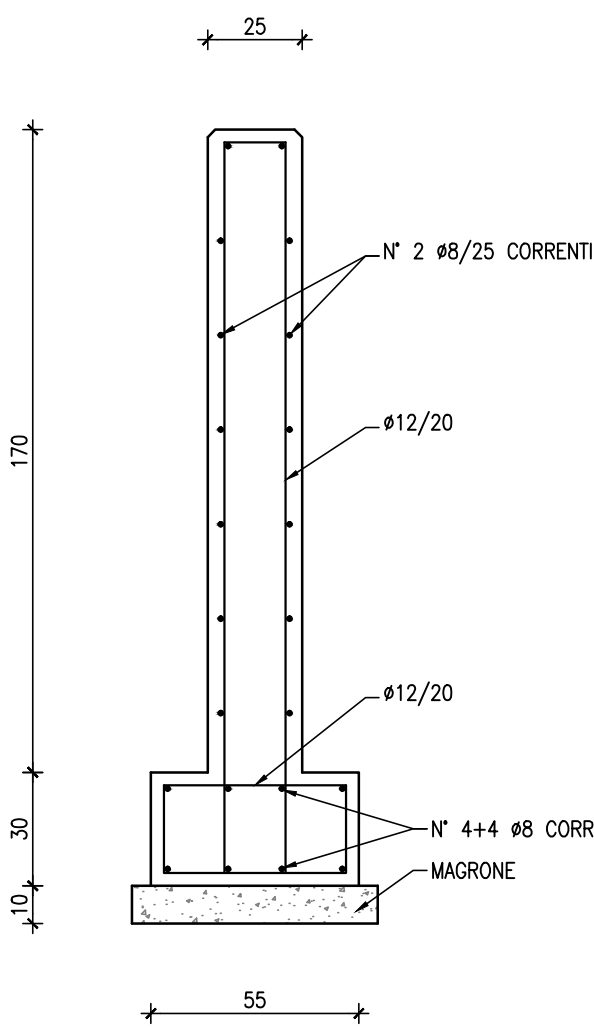
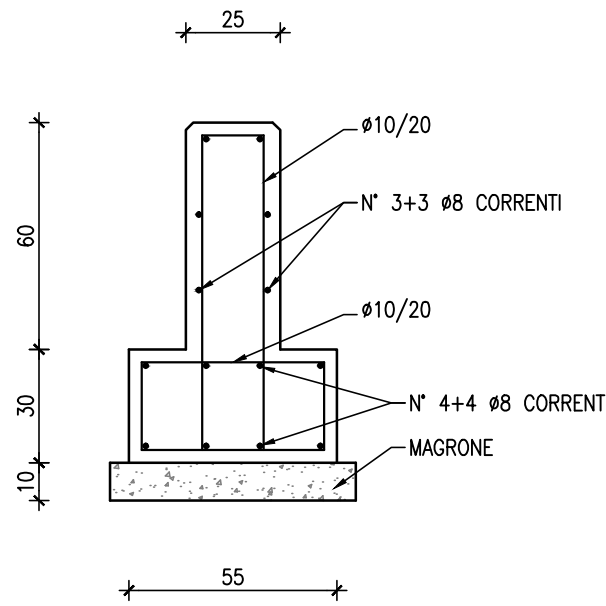


PLANIMETRIA
scala 1:100

PROSPETTO
scala 1:20

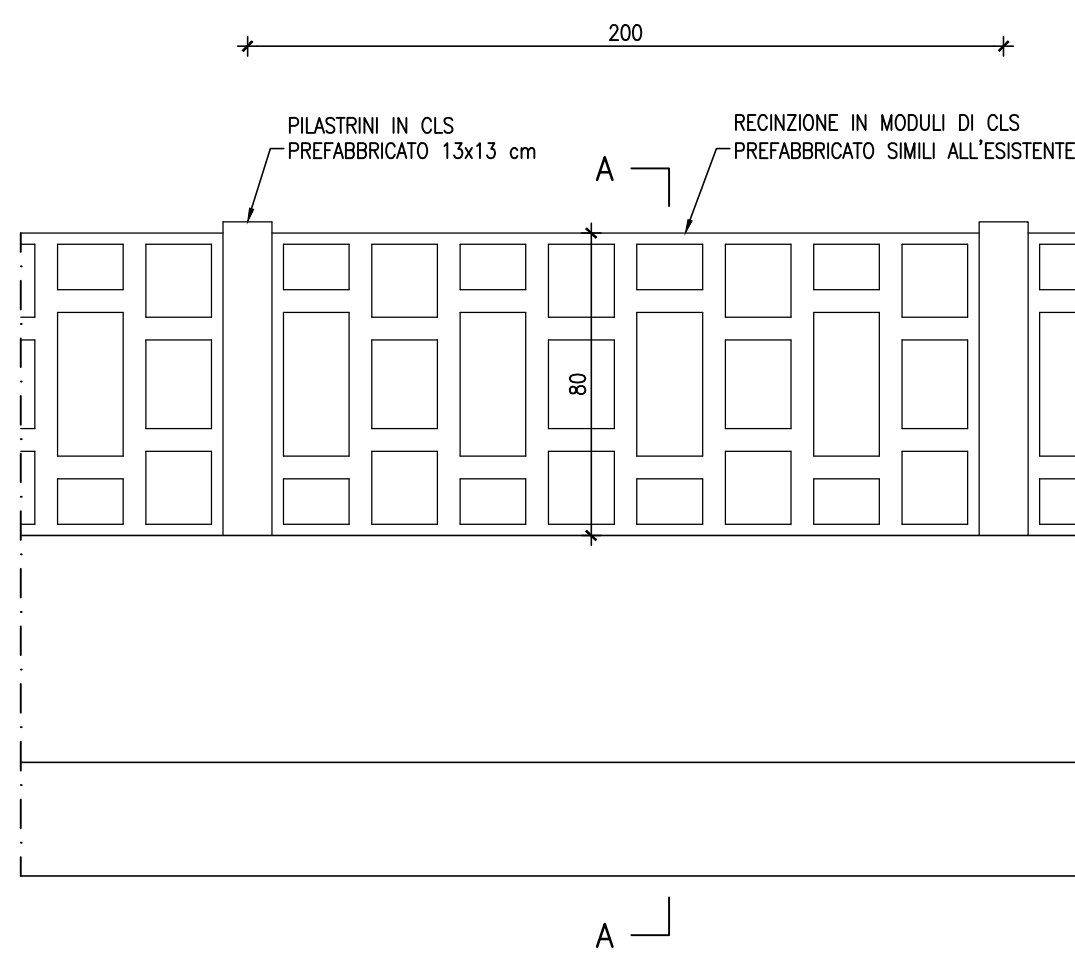
SEZIONE B-B
scala 1:20

SEZIONE A-A
scala 1:20

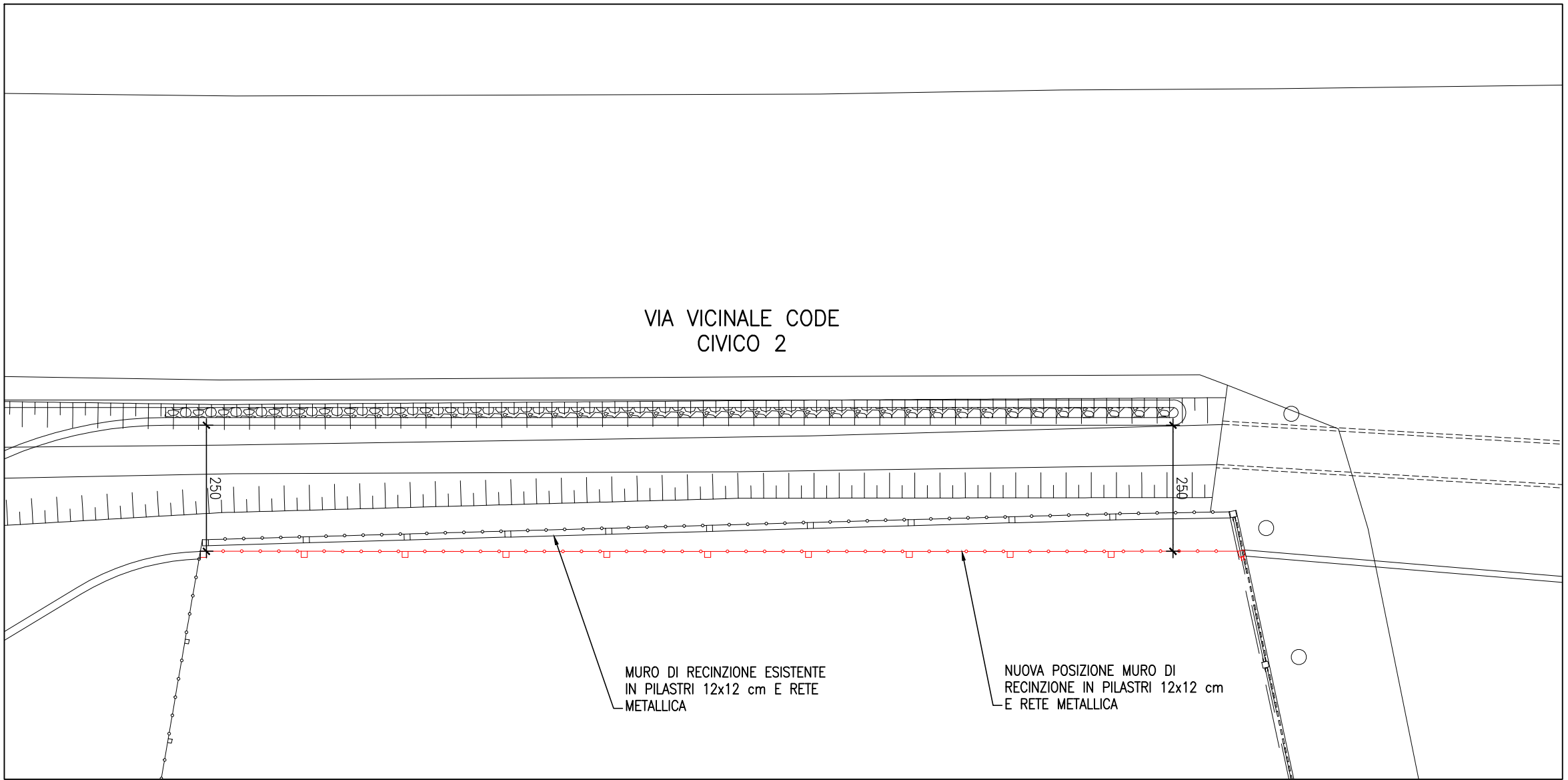
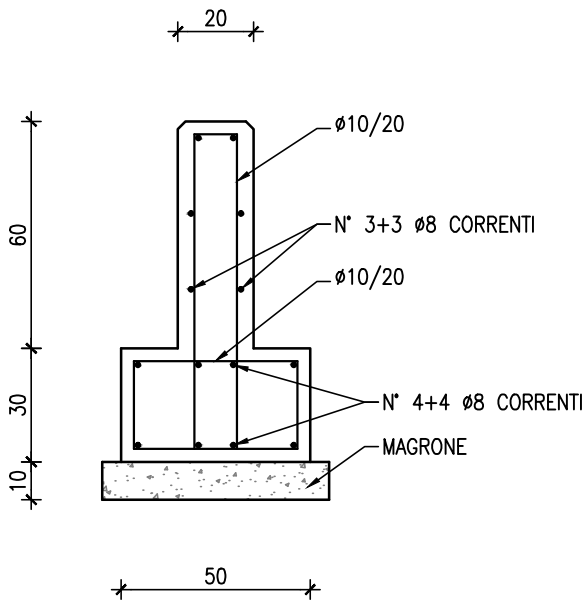


PLANIMETRIA
scala 1:100

PROSPETTO
scala 1:20

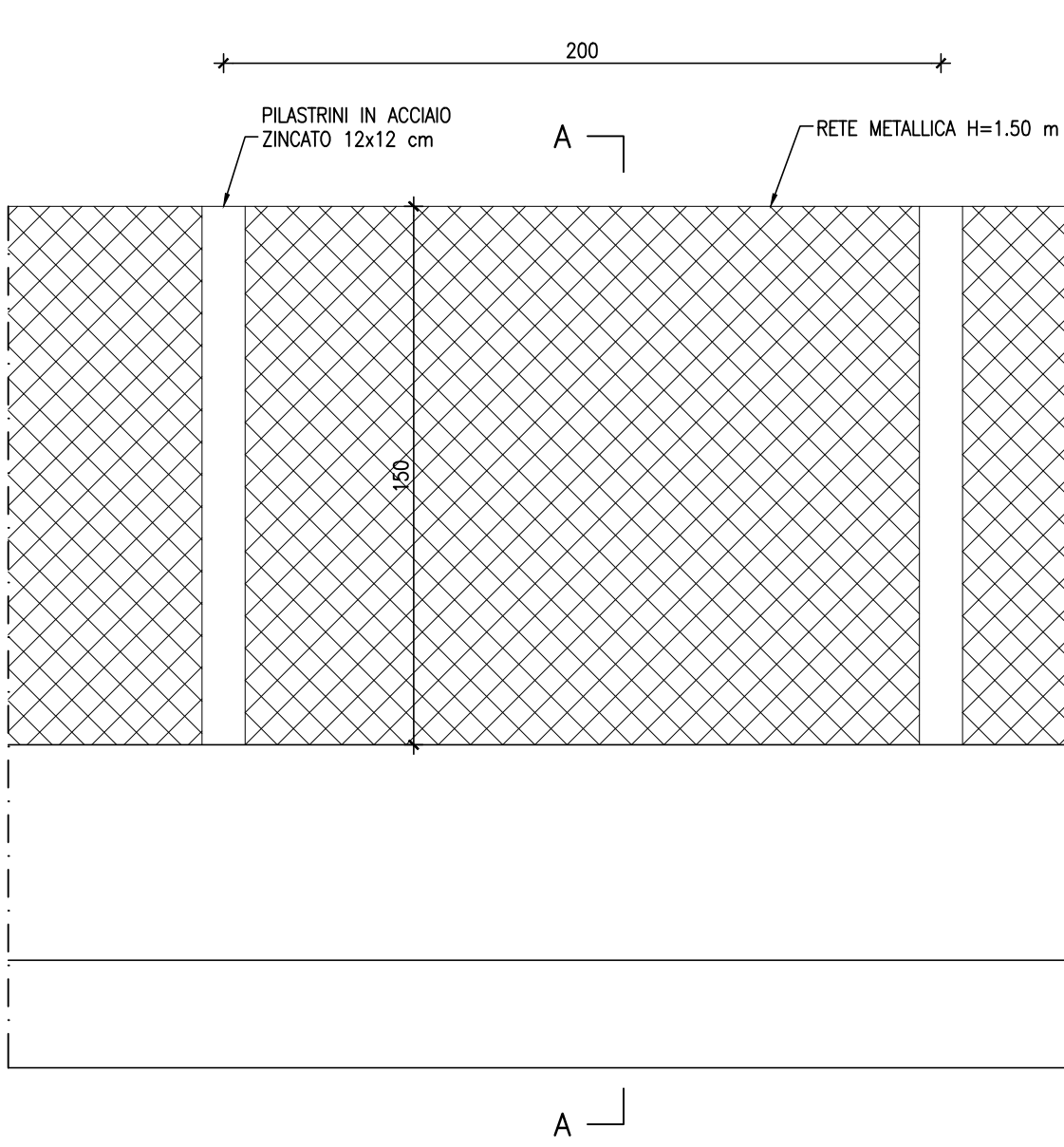


SEZIONE A-A
scala 1:20

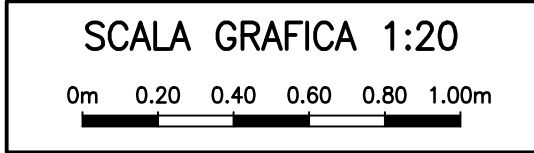
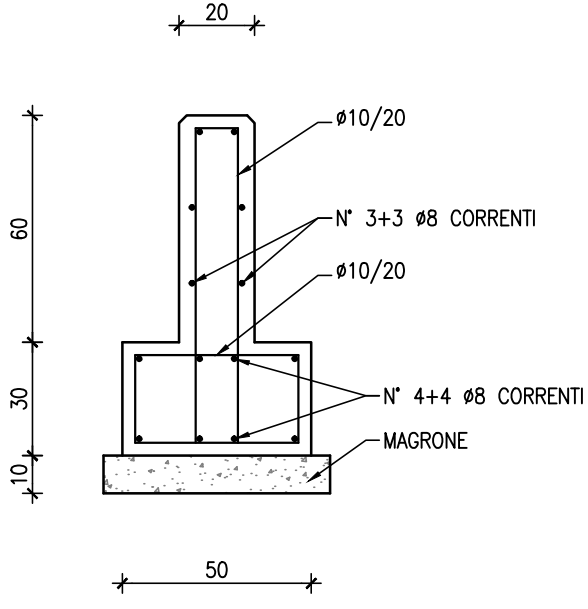


PLANIMETRIA
scala 1:100

PROSPETTO
scala 1:20



SEZIONE A-A
scala 1:20



COMUNE DI BREDA DI PIAVE
PROVINCIA DI TREVISO

II° STRALCIO PIANO COMUNALE
DELLA MOBILITA' DOLCE

TRATTO B2

PROGETTO ESECUTIVO

PISTA CICLABILE
NUOVE RECINZIONI
CARPENTERIE E ARMATURE
Tavola 3 di 3

N. ELABORATO

13C

FORMATO A0

SCALA 1:20-1:100-1:200

CODICE PROGETTO

2840SES1

AN

FC

AM

RESPONSABILE DEL PROCEDIMENTO
DOTT. ARCH. LAURA SMITH

PROGETTISTA DELL'INTERVENTO
DOTT. ING. ANTONIO MARTINI



STUDIO
MARTINI
INGEGNERIA

STUDIO MARTINI INGEGNERIA S.r.l.
info@studiomartini.it
Via S. Antonio 10 - 31044 Breda di Piave (TV) - Italy
Tel. 0422/840551 - Fax 0422/840552