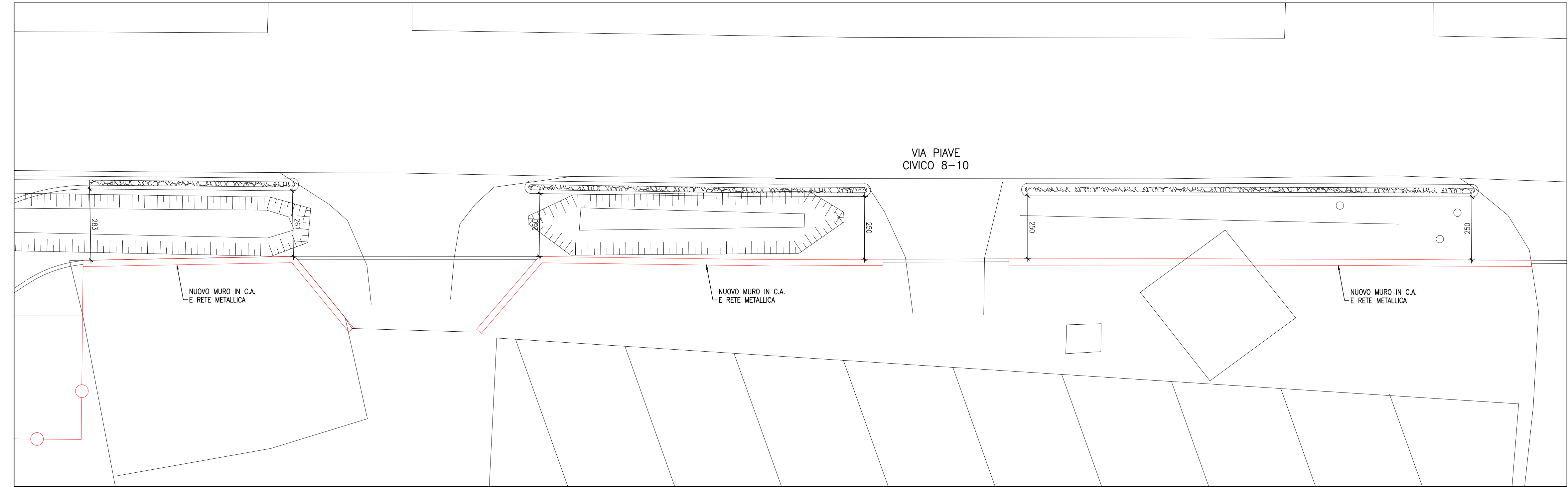
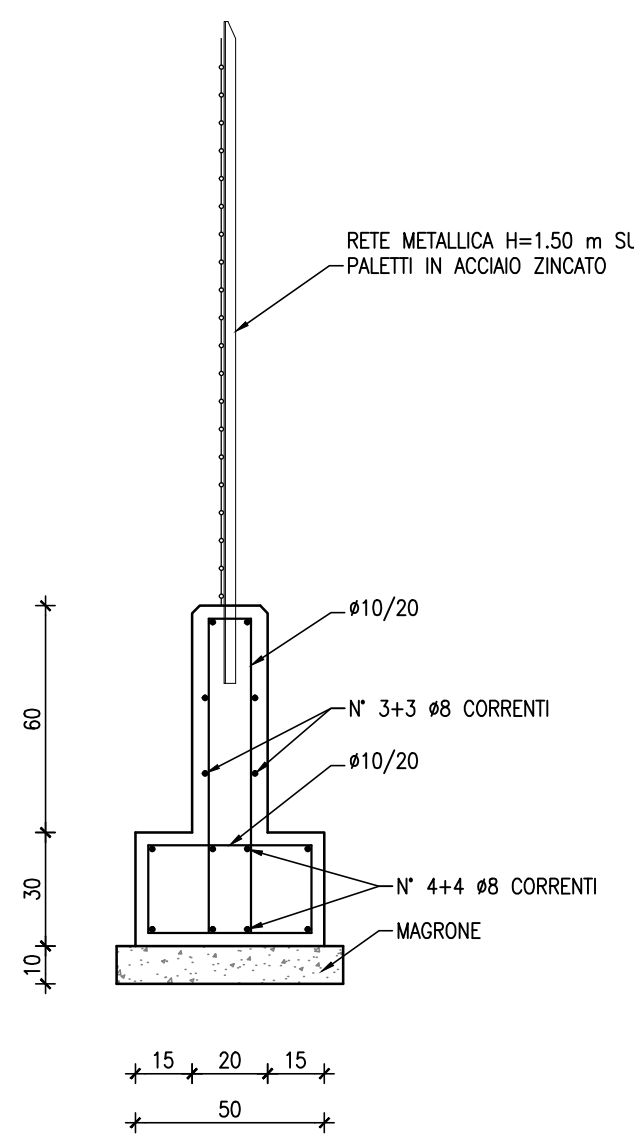


PLANIMETRIA
scala 1:200

SEZIONE TIPO
MURO DI RECINZIONE

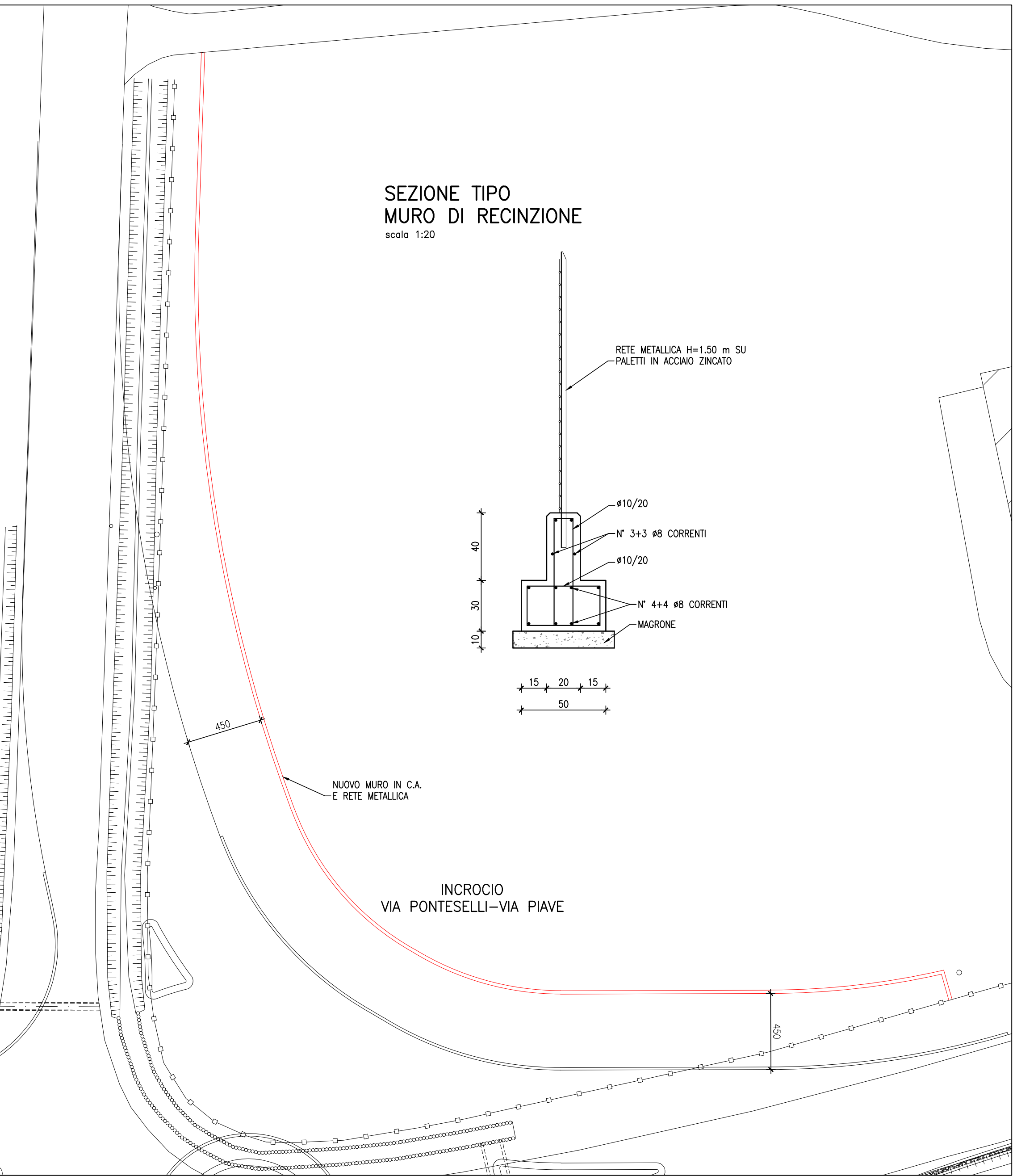
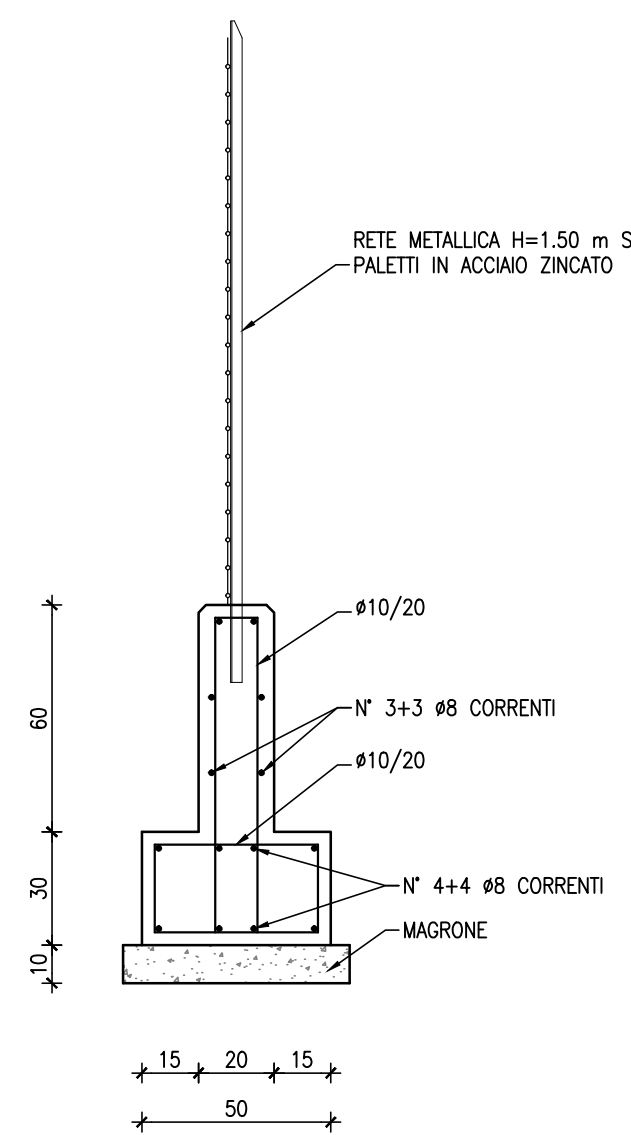
scala 1:20



PLANIMETRIA
scala 1:100

SEZIONE TIPO
MURO DI RECINZIONE

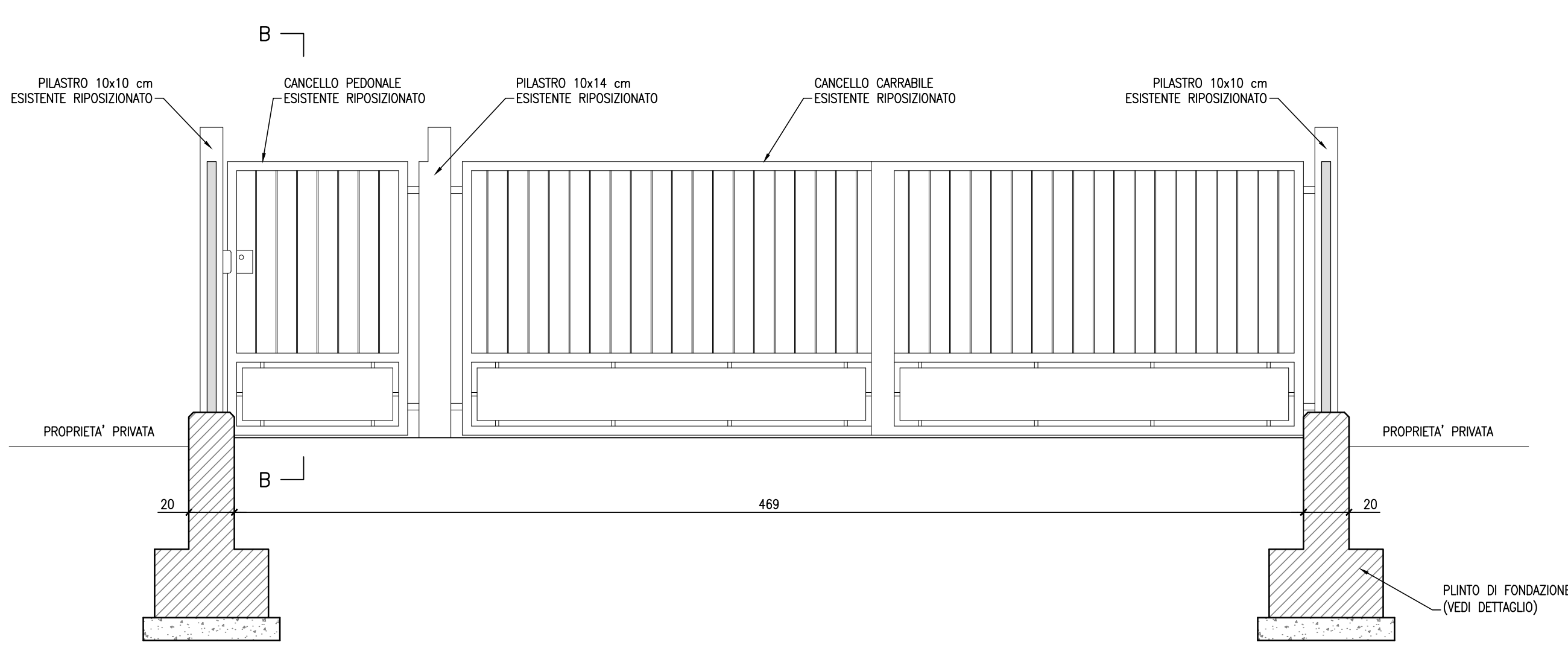
scala 1:20



PLANIMETRIA
scala 1:200

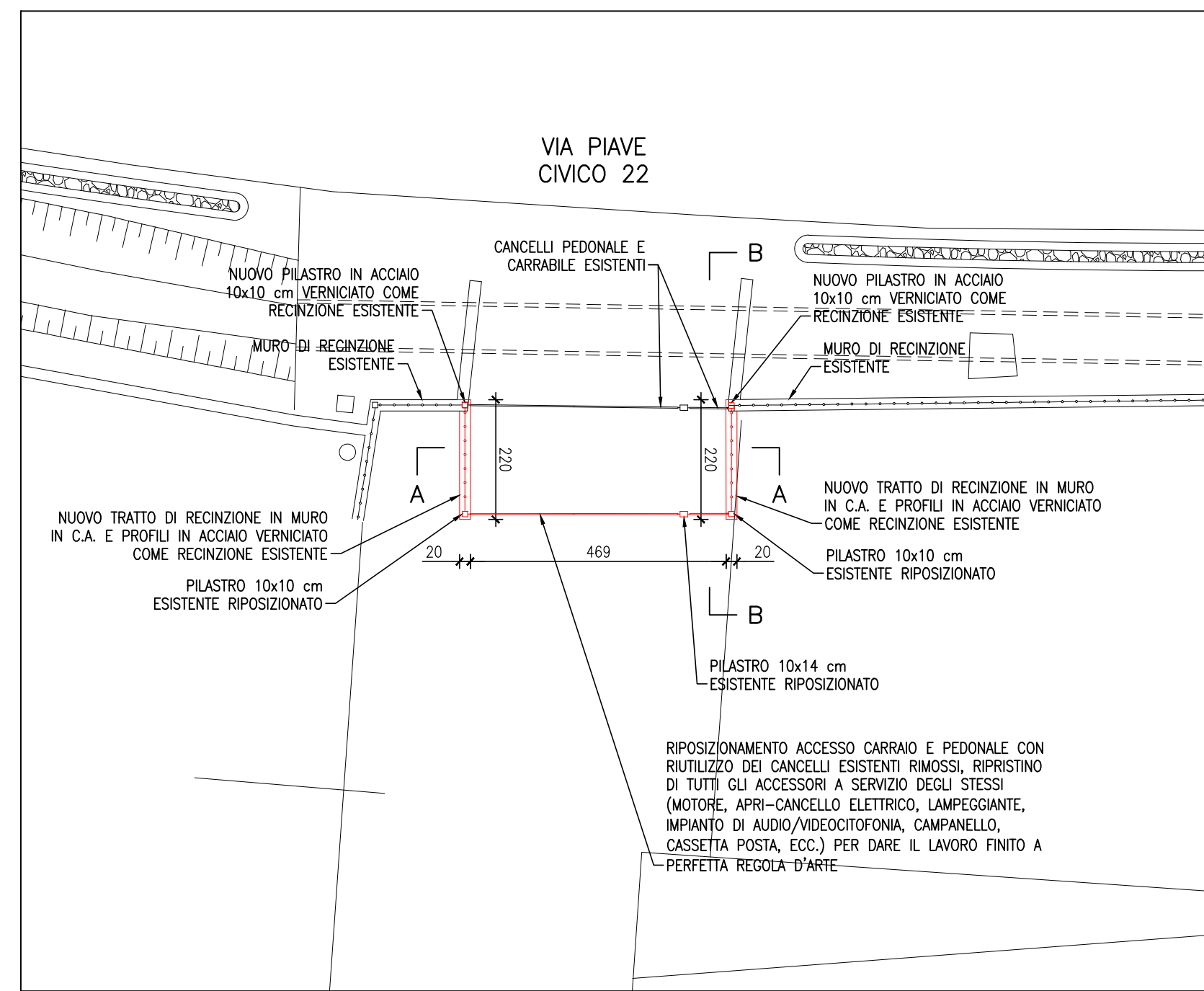
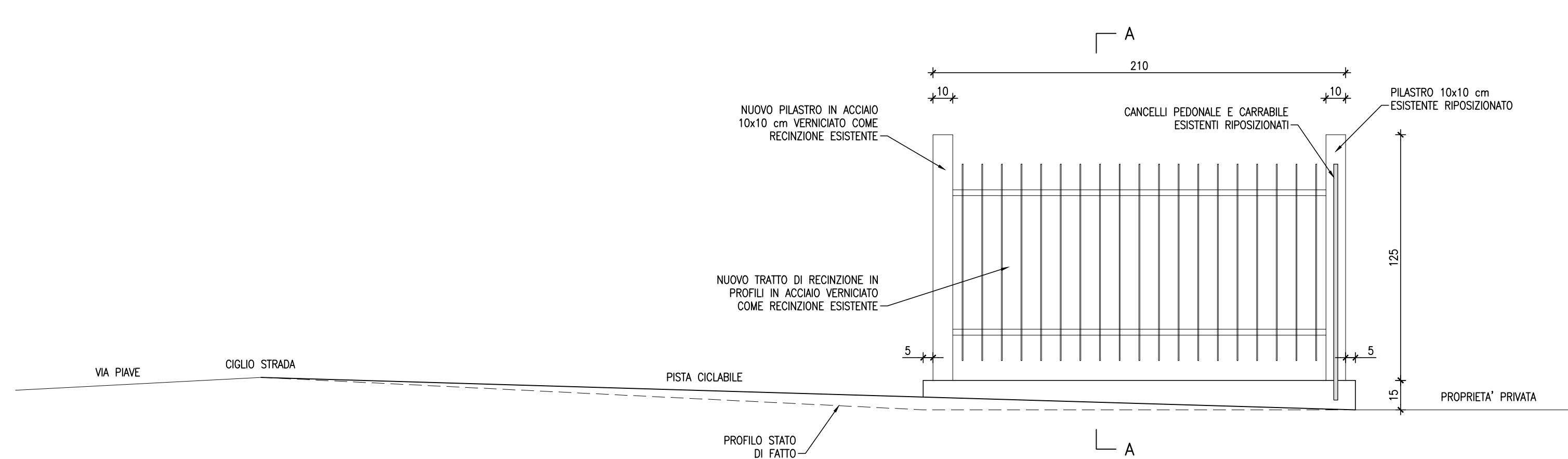
SEZIONE A-A

scala 1:20



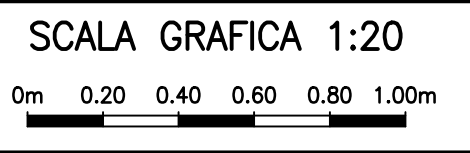
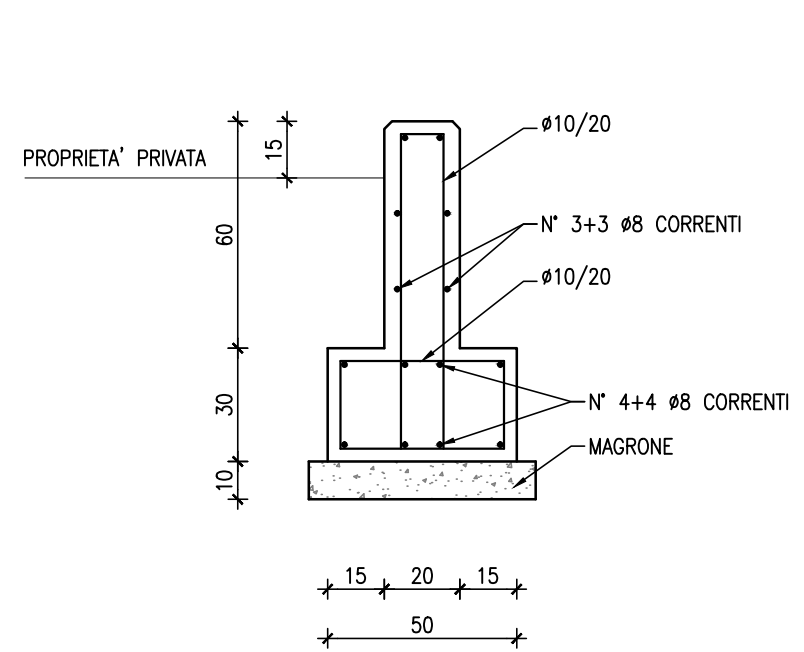
SEZIONE B-B

scala 1:20



DETTAGLIO PLINTO DI FONDAZIONE

scala 1:20



COMUNE DI BREDA DI PIAVE
PROVINCIA DI TREVISO

II° STRALCIO PIANO COMUNALE
DELLA MOBILITA' DOLCE

TRATTO B2
PROGETTO ESECUTIVO

PISTA CICLABILE
NUOVE RECINZIONI
CARPENTERIE E ARMATURE
Tavola 1 di 3

N. ELABORATO

13A

FORMATO A0

SCALA 1:20-1:100-1:200

CODICE PROGETTO

2840SES1_recinzioni_1.dwg

AN FC AM

Redatto Controllato Approvato

RESPONSABILE DEL PROCEDIMENTO
DOTT. ARCH. LAURA SMITH

PROGETTISTA DELL'INTERVENTO
DOTT. ING. ANTONIO MARTINI



STUDIO MARTINI INGEGNERIA S.r.l.
info@studiomartini.it
Via S. Antonio 10, 31044 Breda di Piave (TV)
Tel. 0422/840551 - Fax 0422/840552
P. IVA 03080850265