

The diagram shows a horizontal rod of total length 1300 CM. It features four groups of three coils each, positioned at regular intervals along its length. Dimension lines above the rod indicate the following segment lengths from left to right: 300 CM, 400 CM, 300 CM, 400 CM, 300 CM, 400 CM, 300 CM, and 400 CM.

scala 1/20 - quote in cm

Technical drawing showing two types of wall anchors (Bodenanker) with dimensions in mm.

Left Anchor (Standard):

- Top view: Total width 100 mm, with segments of 40 mm and 60 mm. A central hole has a diameter of 10 mm.
- Side view: Total length 127 mm. The anchor is shown inserted into a concrete wall (hatched area) with a depth of 39 mm. The remaining length is 88 mm.

Right Anchor (Wedge Anchor):

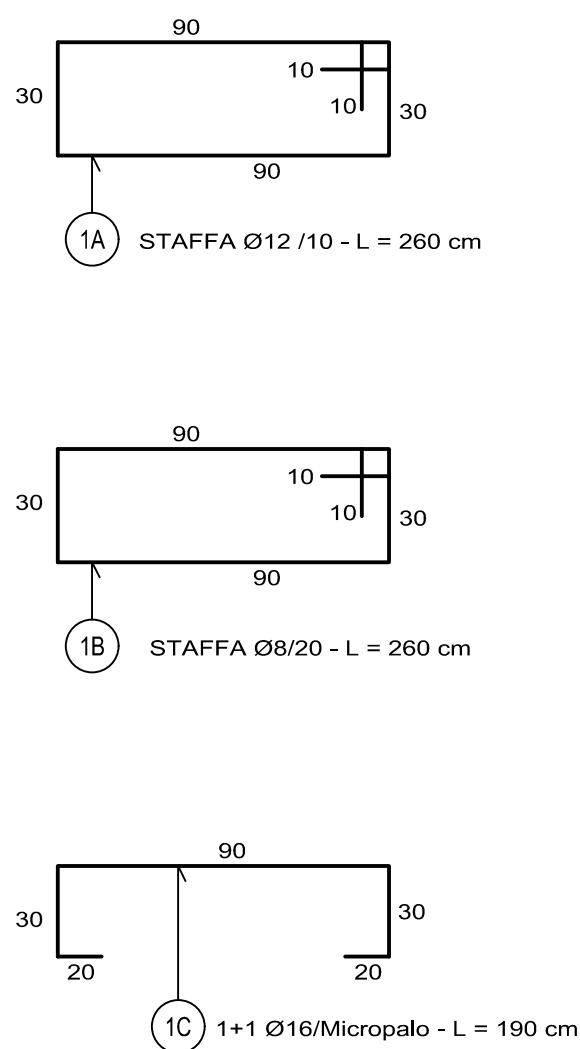
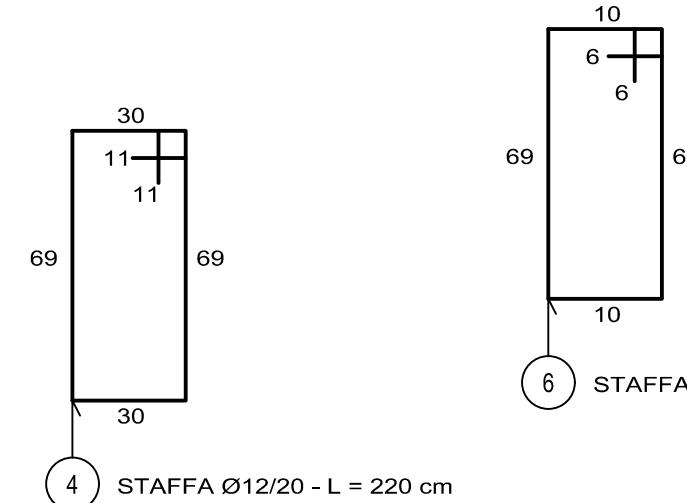
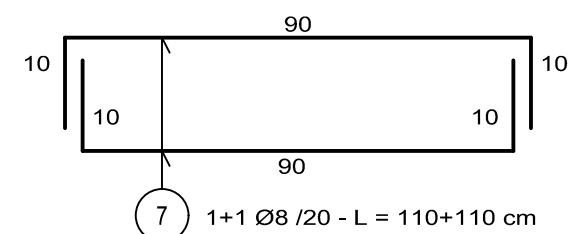
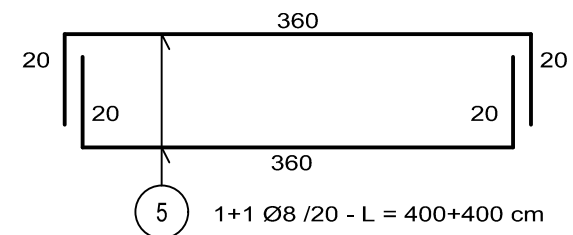
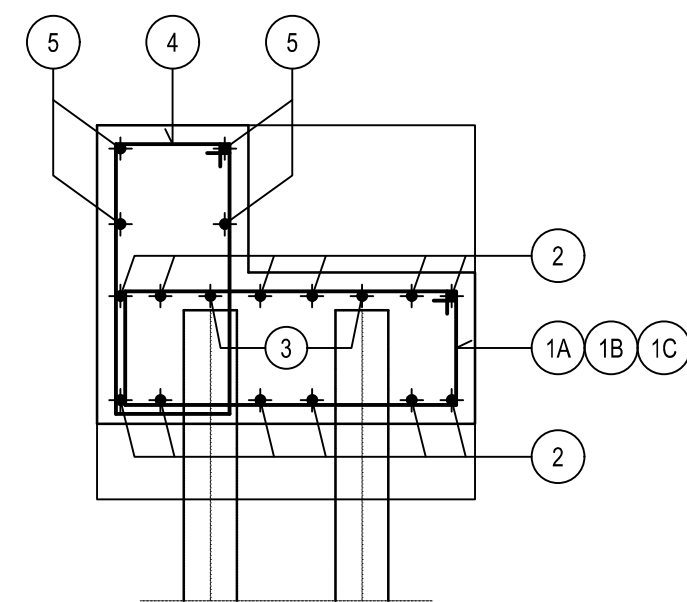
- Top view: Total width 100 mm, with segments of 40 mm and 60 mm. A central hole has a diameter of 10 mm.
- Side view: Total length 127 mm. The anchor is shown inserted into a concrete wall (hatched area) with a depth of 39 mm. The remaining length is 88 mm.

Technical drawing of a rectangular plate with dimensions and hole positions. The plate has a total width of 370 and a total height of 100. There are three holes: two on the top edge and one in the center. The top edge has a total height of 100, with a 40-unit section at the top and a 60-unit section below it. The holes are positioned 39 units from the left and right edges of the 40-unit top section. The center hole is 330 units from the left edge and 126 units from the right edge. The bottom edge has a total width of 370, with a 20-unit section on the left and a 20-unit section on the right. The holes are positioned 39 units from the left and right edges of the 20-unit bottom section.


Technical drawing of a wall cross-section showing dimensions and reinforcement details. The drawing includes a wall with a base layer, a middle layer, and a top layer. The wall is reinforced with three vertical bars, each with a hook at the top and a pointed tip at the bottom. The dimensions are as follows:

- Overall width: 370
- Overall height: 1270
- Top layer width: 20 (left), 390 (middle), 20 (right)
- Middle layer width: 39 (left), 126 (middle), 126 (middle), 39 (right)
- Base layer width: 59 (left), 126 (middle), 126 (middle), 59 (right)
- Reinforcement bar dimensions: 30 (hook), 110 (hook), 40 (hook), 20 (hook)

Figure 1 consists of two schematic diagrams, (a) and (b), illustrating a multi-layered structure. Diagram (a) is a top view showing a rectangular frame with internal components labeled 1A, 1B, 1C, 2, 3, 6, and 7. Diagram (b) is a cross-sectional view showing a grid-like structure with layers labeled 1A, 1B, and 1C, and internal components labeled 2 and 3.



Nota: La Direzione Lavori dovrà verificare la corrispondenza delle ipotesi di dimensionamento geotecnico dei pali elicoidali prima della loro esecuzione in funzione delle istruzioni/metodologie sviluppate dal produttore mediante la determinazione delle caratteristiche geomeccaniche del terreno presente in sito



COMUNE di BREDA DI PIAVE

PROVINCIA di TREVISO

REGIONE VENETO

PROGETTO DEFINITIVO - ESECUTIVO

2° Stralcio Piano comunale della Mobilità Dolce

Tratti F (via Cal di Breda) e G (via Moretti)

CIG 7932362832

CUP H42C19000260008

S.1.2

Progetto strutturale

Passerella sul fiume Mignogola - Tratto F

Armatura paraghiaia e dettagli pali e paraghiaia

Dati Archivio:	File:	Disegnato:	Modificato:	Livello Progetto:	Elaborato n.	Redazione:	Verifica:
2016-00014				definitivo-esecutivo	S.1.2		RdR

PARCIANELLO & PARTNERS

engineering s.r.l.

32016 ALPAGO (Belluno)

via G. Matteotti, 30/d

Cap. sociale Euro 10.000 i.v. - Veneto

C.F. e P. IVA: 01041760255

Tel. +390437 40180 Fax +39 0437 1940380

Email: info@studiodparcanello.com

Web: www.studiodparcanello.com

Tecnico:

data:

File:

Firma:

Il Responsabile Progetto:

Visto: L'Am্ম. Unico

Verificato: il Direttore Tecnico

Disegnato:


Arch. Lio Parcanello

Arch. Lio Parcanello

Arch. Renato Da Re

Il Progettista:

Ing. Luca Zanon



Visto: il Responsabile del procedimento:

Arch. Laura Smith

Il Committente:

Comune di Breda di Piave

Visto :

Breda di Piave, giugno 2020

Questo elaborato è di proprietà dello studio: Parcanello & Partners engineering s.r.l. Qualsiasi riproduzione e/o divulgazione anche parziale deve essere espressamente autorizzata. - via G. Matteotti, 30/d 32016 Alpago (Belluno) tel. 0437 46100 fax 0437 1940800 Email : tecnico@studiodparcanello.com